



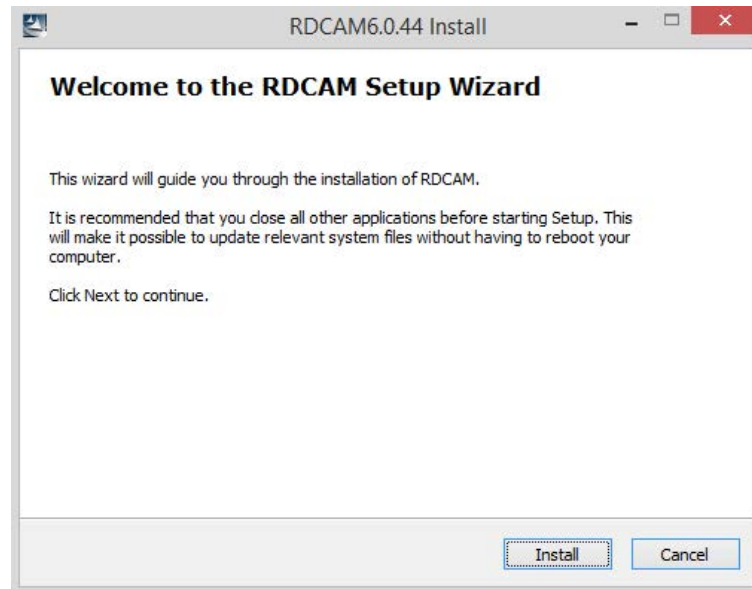
Installation of RDWorks/LaserWORKS v8

608 Trestle Point
Sanford, FL 32771
Phone 888-652-1555 • Fax 407-878-0880
www.BOSSLASER.com

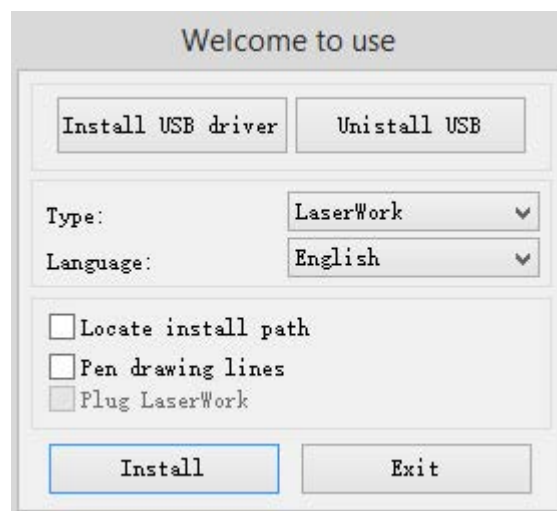
Chapter 1 Software Installation

1.1 Install steps

- (1) Double-click the RDCAMSetup.exe under the installation directory, the following dialog box appears:



- (2) Click **Install**, when extract copy is to be completed, the installation main interface appears:



1.2 Installation settings

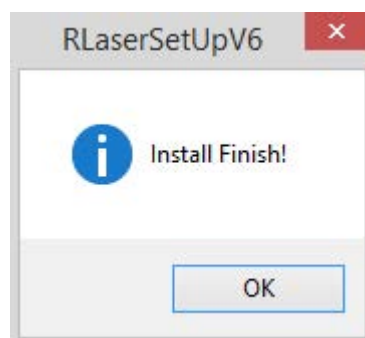
The installer can choose different installation content.

- 1> Install/Uninstall USB driver , reference 《Install USB driver》
- 2> According to the different customer application needs and the habit of using to select the type of software
 - a. Stand-alone software LaserWork.
 - b. The software that plug-ins to CorelDraw. Support the version from Coreldraw11 to X6.
 - c. The software that plug-ins to AutoCad. Support the version from 2004 to 2010.
 - d. The software that plug-ins to Illustrator.
- 3> Choose a different installation languages
At present, it support Simplified Chinese, Traditional Chinese, English and the custom language type.
- 4> Select the software that matches the motherboard

RDC644 (LaserWORKS V6 & LaserWORKS V8)
- 5> Locate install path
When installing LaserWork, default install path is “C:\”, to change the install path, check this option.
When installing the plug-in softwares, under normal circumstances, the install program will locate to the target software automatically. If the installer does not locate to the target software automatically, you need to check this option, and locate to the target software manually.
- 6> Pen drawing lines
This option is only applicable to a particular machine, which has the function of the chalk line, **ordinary machines do not need to check this.**
- 7> Plug laserwork
The installer default install a special plug-ins RDPlug, if the users are more accustomed to using LaserWork program ,can check this.

1.3 Installation

Choose the type of software, installation language and the appropriate motherboard. Click **【Install】** to install the software. After installation is complete, the following dialog box appears to prompt the user that the software has been installed successfully.



1.4 Exit

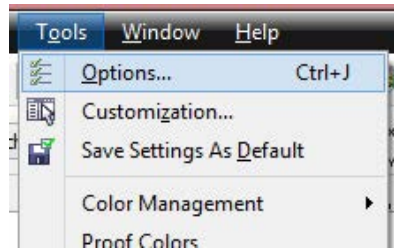
After installing the installation needed. Click **【Exit】** to end the installation process.

Because of the possible need to use several installation, so the installation dialog does not automatically exit, until users click button **【Exit】** .

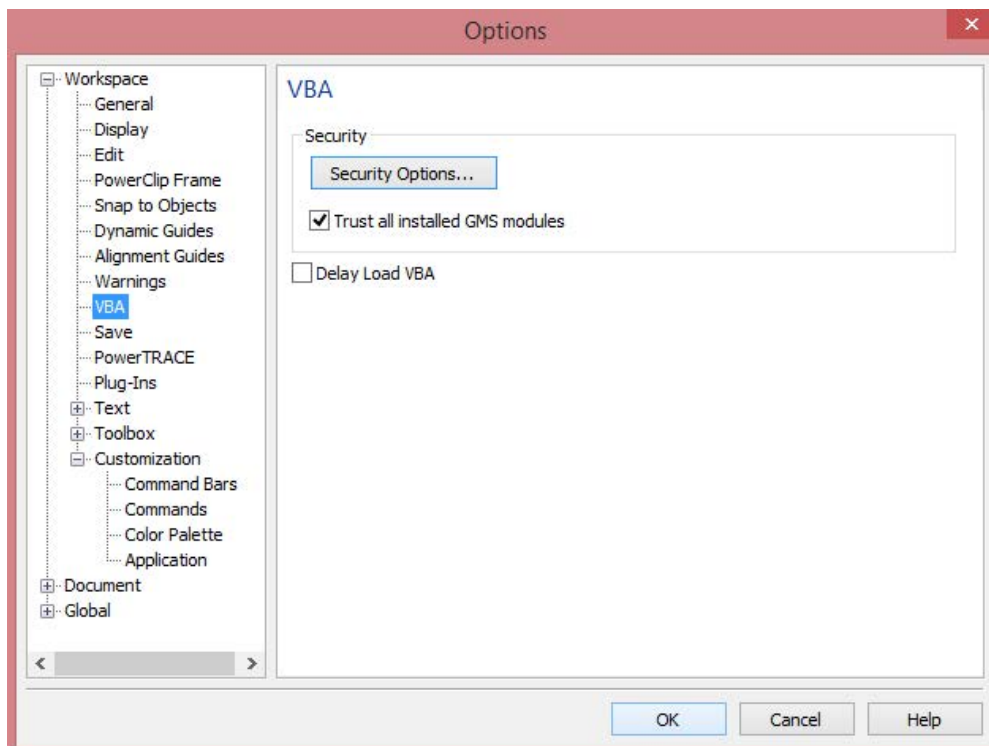
Chapter 2 CorelDraw Plug-in Installation

Plug-in software support the version from CorelDraw11 to X6, but some simplified versions of CorelDraw is not supported. Here to the installation of CorelDraw X6 as an example to introduce the installation process of plug-in software. If not specified, it is referring to CorelDraw X6.

Before installing the plug-in software to run CorelDraw.

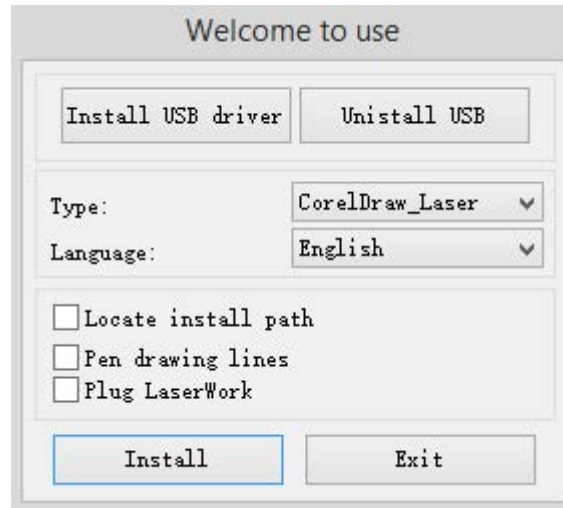


Select **【Tools】** -> **【Option】**

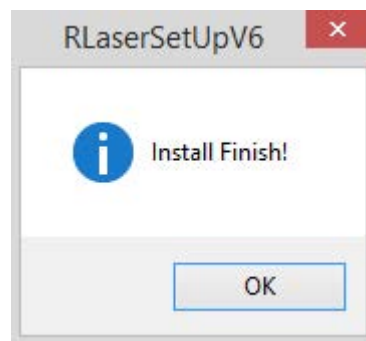


In the pop-up dialog box, select VBA, on the right do not check the “delay load VBA”, then OK, and exit the application CorelDraw.

Run the program of installation, choose “Type” to “CorelDraw_Laser”, then click **【Install】**.




The installer will automatically install the plug-in software to the all versions of CorelDraw RDCAM that are installed on the operating system and pop-up dialog box.

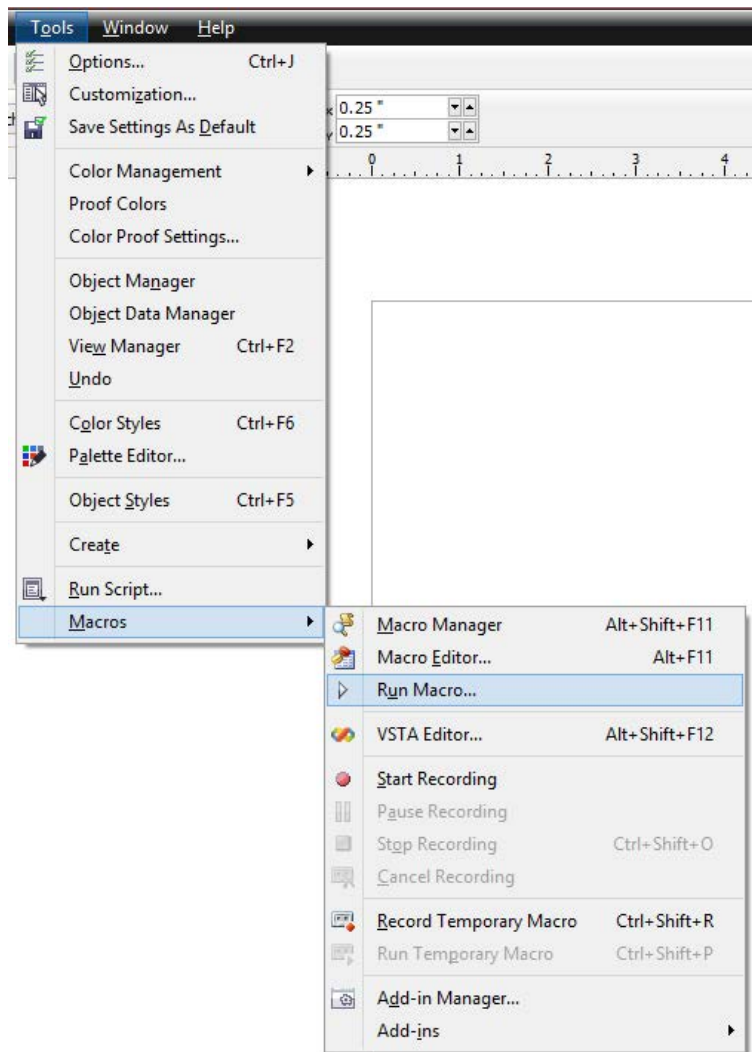


For some versions of CorelDraw (such as green version) may not automatically navigate to the locate where the CorelDraw is installed on. Only need to check “Locate install path” on the installation software, and then manually browse to navigate the folder location to the root of CorelDraw software where the plug-in program should be installed on.

Exit the installation program, and run CorelDraw.

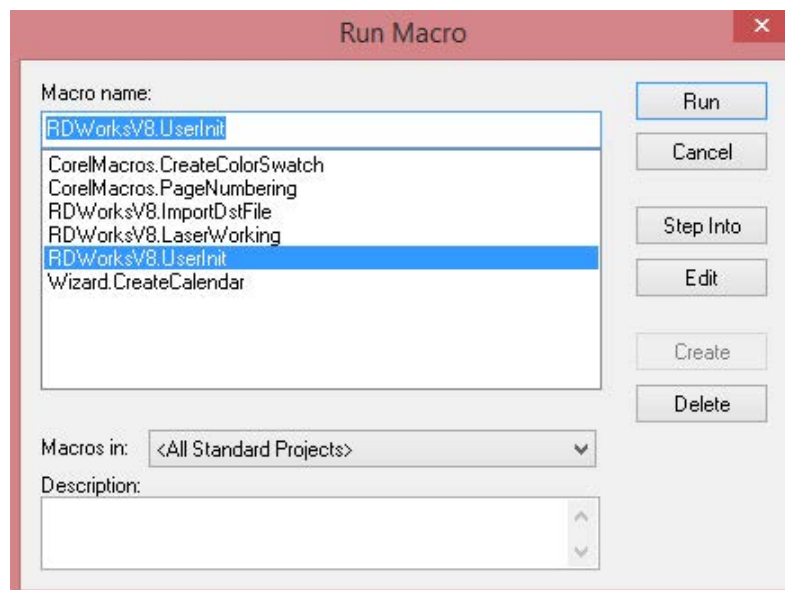
Toolbar in the CorelDraw interface will appear .

If the button does not appear, you should select **【Tools】** -> **【Option】** in the menu.



Then go to Tools > Macros > Run Macro...

If the toolbar does not appear, reinstall the software CorelDraw.



In the “macro location” select “<All Standard Projects”.

And the “Macro name” choose the RDWorksV6.UserInit. (or RDWorksV8.UserInit)

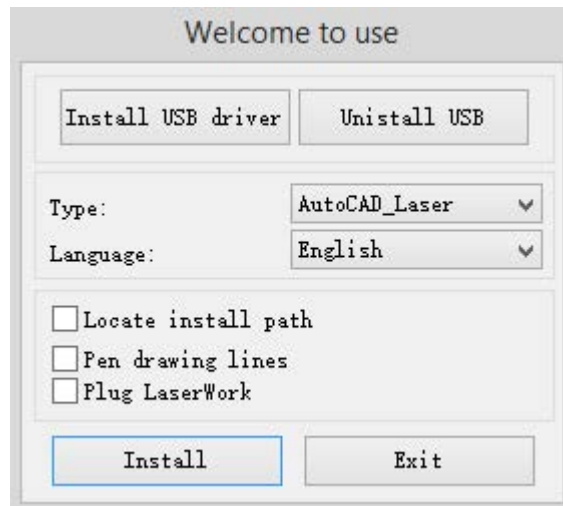
Note: Choose your .UserInit by your version!

And then “Run”.

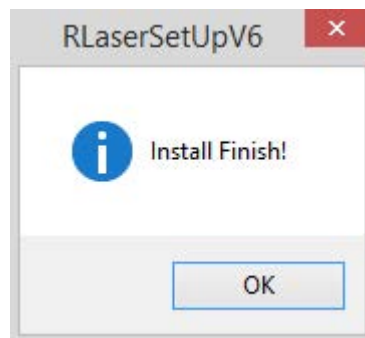
Chapter 3 AutoCad Plug-in Installation

AutoCad plug-ins can be used to AutoCad2004-2010 non-simplified version. Here to the installation of AutoCad2004 as an example to introduce the installation process of plug-in. If not specified, it is referring to AutoCad2004. Close all running AutoCad programs before AutoCad plug-in installed.

Run Setup. Select “AutoCad_Laser” as The “Type”, and then click **【Install】** .



Setup will automatically install the RDCAM plug-in software to all versions of AutoCad that were installed on the operating system and pop-up dialog box.

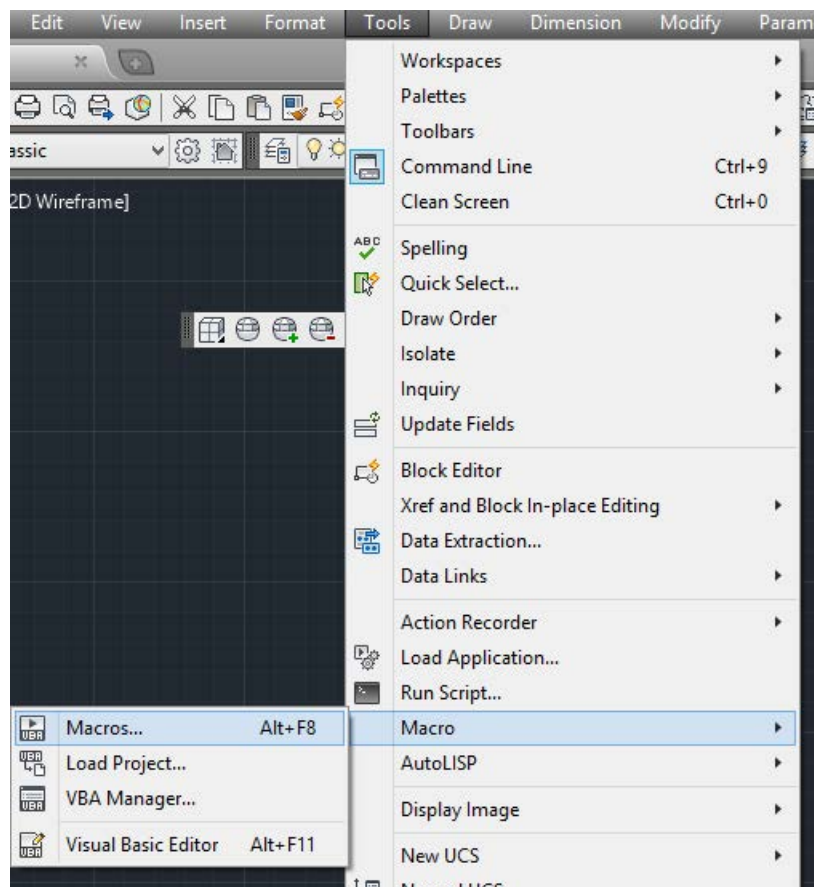


For some vesions of AutoCad(such as green version) may not navigate to the locate where the AutoCad was installed on. Only need to check “Locate install path” on the installation software, and then manually browse to navigate the folder location to the root of AutoCad software where the plug-in program should be installed on.

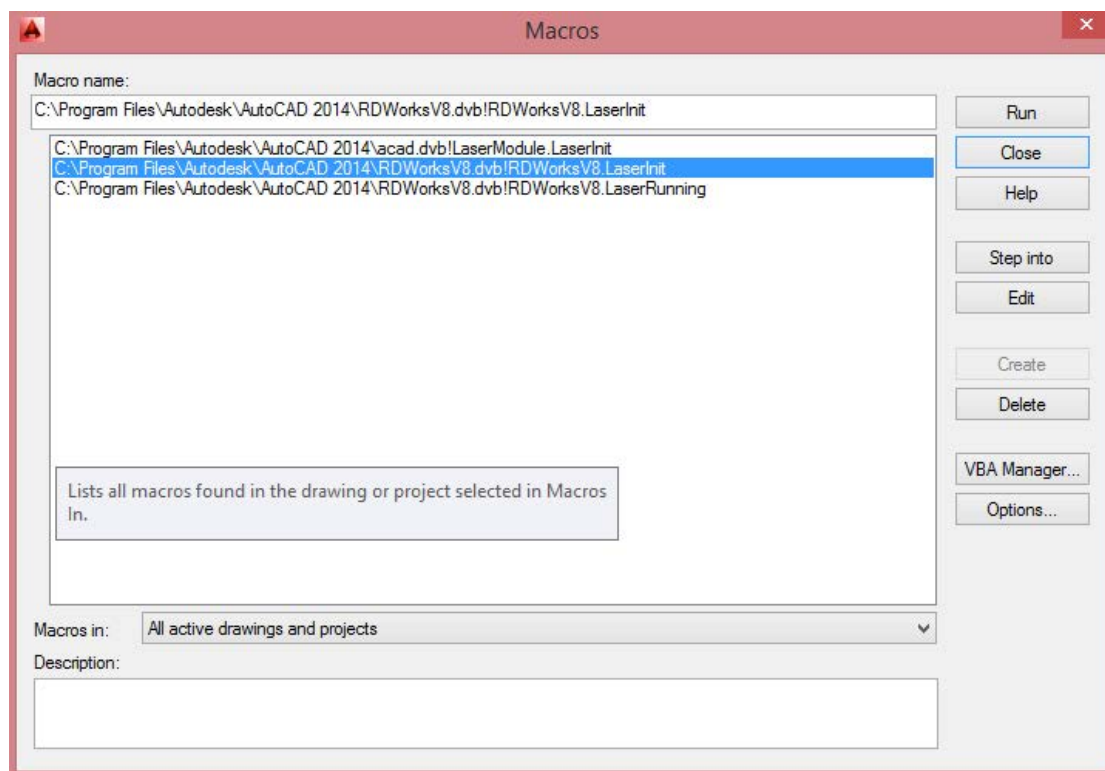
Exit the installation program, and run AutoCad.

Toolbar interface in AutoCad will appear 

If the button does not appear, select **【Tools】** -> **【Macro】** (A)->Macro(M) in the menu.



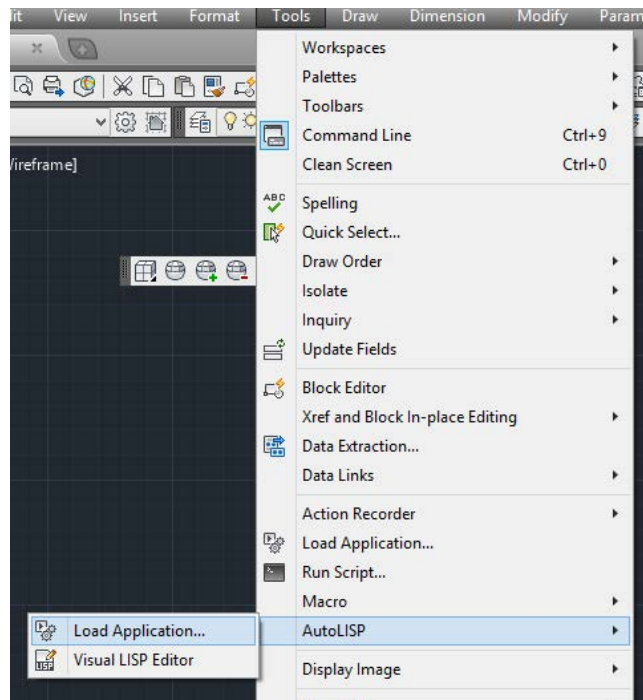
If you can not find it in the menu, it is because the version of AutoCad may not support the plug-in. Please re-install a full version of AutoCad.



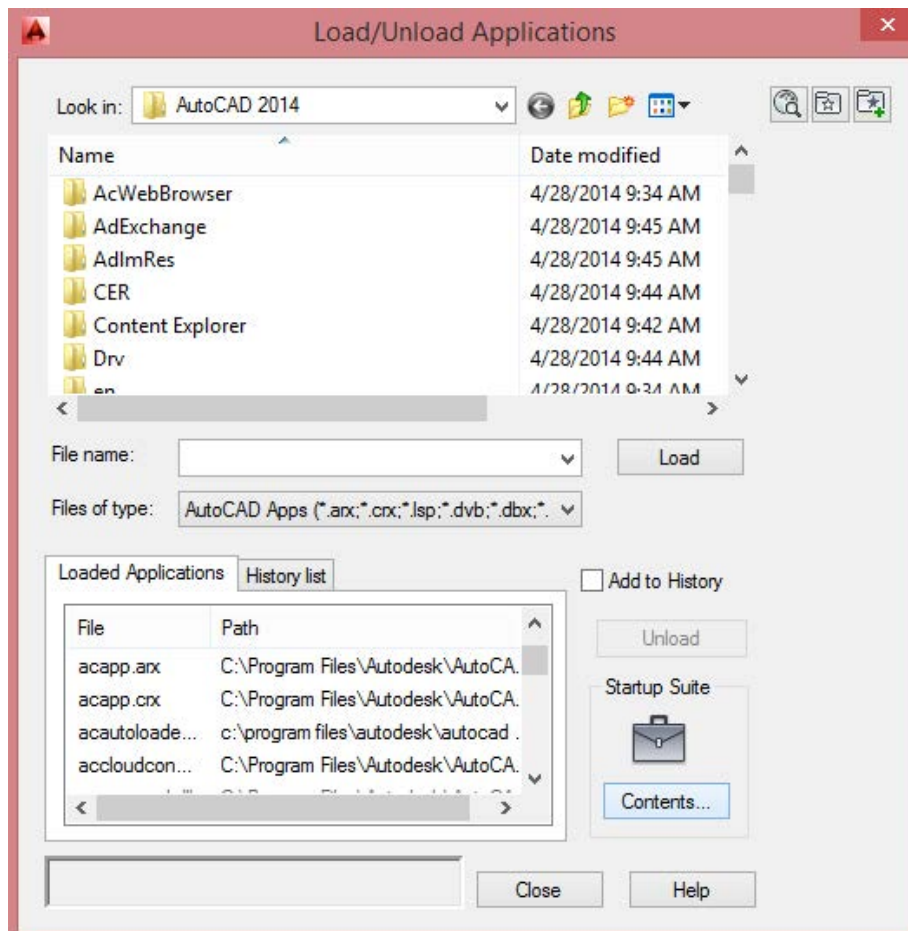
In the pop-up dialog box, select LaserInit, and run.

The plug-in toolbar can occur if you select this option, but when you close AutoCad and then open the AutoCad software again. But also do not see the toolbar. Then it is possible that your computer is infected with a virus. You must manually to define the boot loader works of AutoCad, or you can re-check for viruses or reinstall the operating system and AutoCad software.

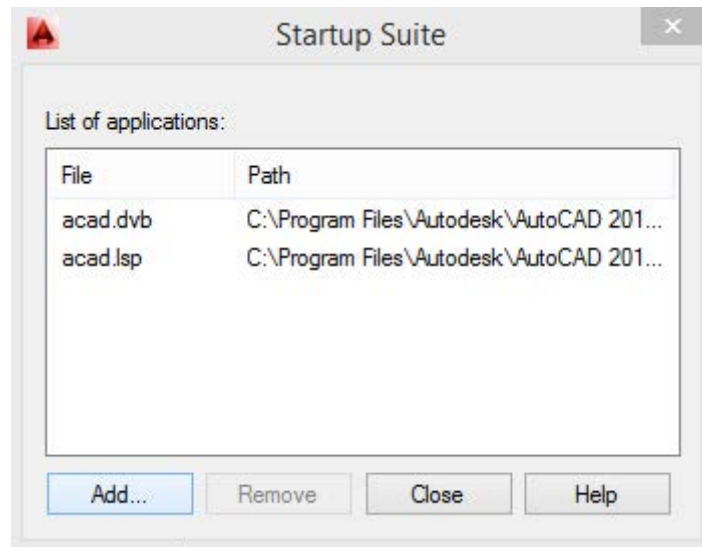
Manual process of loading plug-in as follows, select the menu **【Tools】** ->AutoLISP-> Load Application...



In the dialog box, you should to choose the “Content” button that was under the “Start Group”.



Select “Add” button in the pop-up dialog box. In the AutoCad directory, manually locate and select acad.dvb,acad.lsp. And loading these two files.

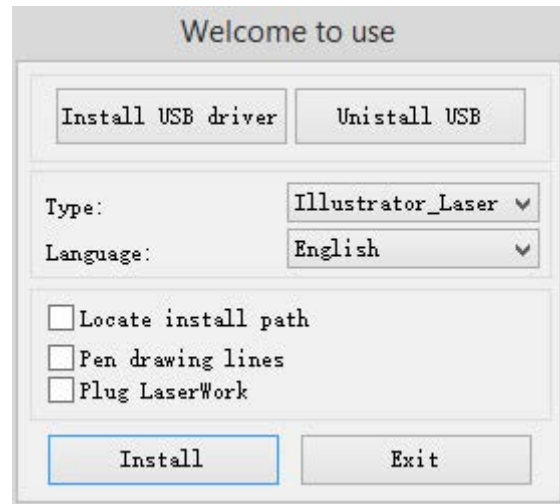


Adding the file, close the dialog box, and then close the AutoCad. You can see the plug-in toolbar when you open the AutoCad again.

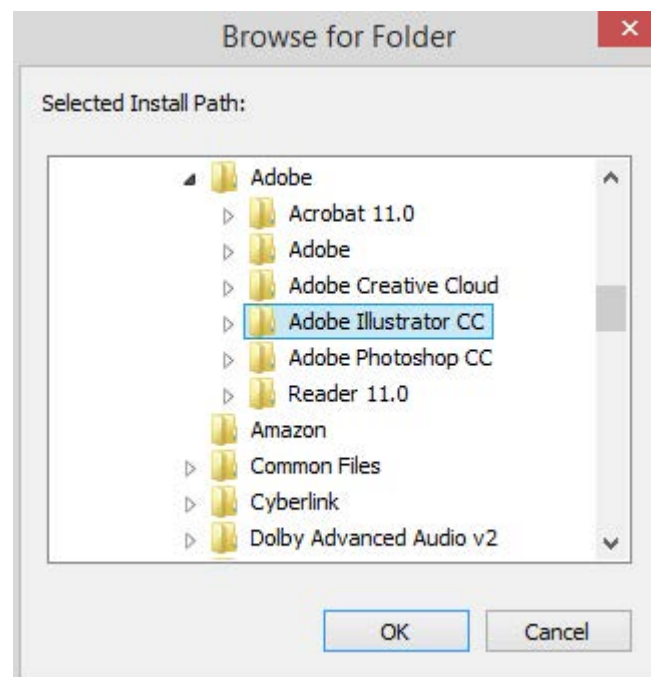
Chapter 4 Illustrator Plug-in Installation

Illustrator plug-in are now available for the non-simplified of Illustrator CS5. The other version is not tested. When Illustrator was installed, you should close the running Illustrator procedures.

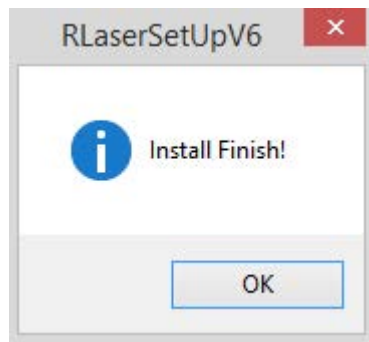
Run Setup. Select “Illustrator_Laser” as the “Type”. And then click **【Install】** .



As Illustrator is green software, installation program can not automatically find the installation directory where the need to manually locate the installation path. Select the Illustrator installation folder, and click “OK” button.



After installation is complete, the following dialog box appears.



Exit the installation program, and run Illustrator.